

# SCHMIDT



## 2026

Kitchens

Living Rooms

Bedrooms

Bathrooms



# EDITORIAL

At Schmidt, we believe in the power of design. A design that doesn't merely dress up a space, but transforms it profoundly. A design that makes spaces more fluid, more functional, more beautiful, and more sustainable.

From the very beginning, our mission has been to imagine, design, and craft bespoke furniture that enriches your living spaces with sustainability at its core. In a world where the fast and fleeting often prevail, we embrace a different path—one that blends functional, aesthetic, durable, and human-centered expertise. Rooted in heritage yet driven by innovation, our approach evolves with new needs and forward-thinking solutions.

We don't just furnish—we accompany you. A dedicated design expert supports you at every stage, from the first concept study to the final delivery and installation, ensuring your vision is brought to life with care and precision.

That's the Schmidt commitment: to offer you much more than a layout. A personalised experience. A promise kept. An interior that reflects who you are, and with greater value, for the long term.



TIMELESS CRAFT.  
LASTING DIFFERENCE.





"For over 60 years, our Schmidt furniture has been manufactured in Alsace at the Schmidt Group factories. Schmidt Groupe is now B Corp™ certified. This certification measures a company's entire social and environmental impact. Guided by a mission, B Corp Certified® companies benefit all their stakeholders: employees, customers, the community and the environment. This recognition reflects our desire to be a positive driving force in the face of today's major challenges for the planet and its inhabitants.

Schmidt is proud to be a Schmidt Groupe brand and be part of this movement contributing to a more inclusive, equitable and regenerative economy!"



**ANNE  
LEITZGEN**

*The granddaughter of the brand's founder Hubert Schmidt is now the Group's CEO and continues to ensure that people form the backbone of the company's history.*



Schmidt Groupe is part of a global movement aimed at building a more inclusive, equitable and regenerative economy.

Schmidt is a brand of Schmidt Groupe, a B Corp™-certified French manufacturer of home living solutions.





### A Family Story

Founded in 1934 by Hubert Schmidt, our company is built on strong values: high standards, a passion for quality craftsmanship, and a tradition of passing on know-how. These founding principles continue to shape our responsible, people-first culture—now carried forward by Anne Leitzgen, the founder’s granddaughter.



### A Brand with Lasting Heritage

Since 1959, Schmidt has been transforming interiors by combining timeless craftsmanship with innovative design. From the iconic Heidi sideboard to our cutting-edge 3D FIT concept, our expertise evolves with every generation.



### A Brand That Cares

We're committed to building the homes of tomorrow—more sustainable, more responsible. That's why we use wood from responsibly managed forests\* and hold PEFC certification.

\* At least 80%



### A Strong and Trusted Network

Closer to you than ever, our trusted network includes over 29 showrooms in the UK and more than 560 worldwide.





TIMELESS **CRAFT.**  
LASTING DIFFERENCE.

**INTELLIGENT**  
**craftsmanship**

Every idea is the product of a dedicated team of engineers, designers, and planners who work together to find, test, and refine the best solutions to meet your needs. From design to manufacturing, each step focuses on achieving excellence through smart innovation, optimised space, built-in durability, and personalised details.



**AESTHETIC**  
**craftsmanship**

Schmidt harmonises lines, textures, and colours with elegance. Refined finishes, sophisticated colour palettes, softened shapes, and plays of light create unique, inspiring interiors that are both harmonious and sophisticated.



**HUMAN-CENTERED**  
**craftsmanship**

At Schmidt, we listen, understand, and respect. Our teams are driven by the same commitment: to build a sincere, caring, and lasting relationship with every client. This same care is extended to those who imagine, craft, and install our solutions every day.



**SUSTAINABLE**  
**craftsmanship**

From the beginning, Schmidt has created interiors where design goes hand in hand with responsibility. Rigorous material selection, controlled resource management, and the choice of ethical partners — our collections are part of a holistic approach, mindful of both the environment and quality of life.



Christian Lacroix × SCHMIDT  
MAISON

## GIVE LIFE TO 3 AUDACIOUS DESIGNS



*"For this third edition, our two French companies have combined their talents to create a new dreamlike design: Iris des Marais."*

*This design reflects the creative streak and freedom of Christian Lacroix Maison. Each of our designs is tailored to suit every room of the home in keeping with Schmidt Groupe's Home Design concept."*

**Sacha Walckhoff**  
CREATIVE DIRECTOR  
CHRISTIAN LACROIX MAISON



### ALGAE BLOOM

With a harmonious combination of precious minerals and marine flora, the "Algae Bloom" design celebrates the rich and flamboyant natural environment that Schmidt and Christian Lacroix Maison have always used for their inspiration.

### PRÊTE-MOI TA PLUME

A graphical print featuring a swirling arrangement of multi-coloured feathers, the "Prête-moi ta Plume" design reflects the creative spirit and flamboyant world of Christian Lacroix Maison.



### IRIS DES MARAIS

Drawing its inspiration from the origins of Christian Lacroix Maison, this new design conjures up images of the city of Arles and the beautiful irises that flower along the banks of the Rhône. This design captures their multi-coloured petals against a backdrop of shimmering colours.



Jean **PORSCHÉ** × **SCHMIDT**

## ELEVATE TIMELESS STYLE



*"We've created a space that shows how, with a little imagination, you can completely reinvent what's possible with Schmidt to create something truly unique and one-of-a-kind."*

*The full range of finishes and materials gave us a starting point, which we used to showcase a loft that is elegant, playful, and comfortable."*

**Jean Porsche**  
ARCHITECT & INTERIOR DESIGNER  
Project from Madrid, Spain



Schmidt has partnered with Jean Porsche, a renowned Mexican architect, for a collaboration defined by elegance, boldness, and refinement.



Through this, Schmidt showcases its expertise in creating bespoke interiors that combine aesthetics, functionality, and durability.







# INVITATION TO...

## 16 COOKING

### Kitchens

- 18 Paris
- 24 Cardiff
- 28 Rome
- 32 Stockholm
- 36 Toulouse
- 40 Liverpool
- 42 Blaavand
- 44 Lourmarin
- 48 Milan
- 50 Oslo
- 56 Copenhagen
- 60 Aix-en-Provence
- 62 London
- 66 Bristol
- 68 Odense

## 72 GETTING DRESSED

### Dressing rooms

- 74 Vendôme
- 80 Biarritz
- 82 Edinburgh
- 84 Glasgow

## 86 WORKING

### Desks

- 88 Antibes
- 90 Helsinki
- 92 Geneva

## 94 RELAXING

### TV units

- 96 Bergen
- 98 Palerme

## 100 TIDYING

### Sideboards & bookcases

- 102 Versailles
- 103 Montparnasse
- 104 Oxford
- 106 Côme
- 108 La Ciotat
- 110 Lausanne
- 111 Zurich

## 112 STORING

### Larder & laundry rooms

- 114 Amsterdam
- 116 Tallinn
- 118 Malmö
- 119 Chartres

## 120 STRUCTURING

### Room partitions

- 122 Rome
- 124 Sélestat
- 126 Riga

## 128 GETTING READY

### Bathrooms

- 130 Montmartre
- 132 Turin
- 134 Birmingham
- 135 Brest

## 136 VISUALISING

### Designing your project

- 138 Prepare your project
- 140 The design of a Schmidt kitchen
- 142 Custom-made in 3 dimensions
- 144 Key collection
- 146 Be daring, be colourful
- 147 Make a stylish entrance
- 150 Choose your surface
- 152 Bring colour to your carcasses
- 154 Make a lasting impression
- 159 Schmidt's commitment





# COOKING

The kitchen is the home's beating heart, the place where family and friends can socialise and spend quality time together. Over the years, technological boundaries have been pushed ever further, family dynamics have changed, and new trends and styles have continually emerged, but the kitchen has always managed to transform and adapt. Once isolated, kitchens have now opened up to become an integral part of our living spaces. They encourage interaction and foster a sense of well-being. They are a place where precious memories are forged for many years to come.



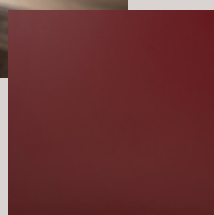


# PARIS

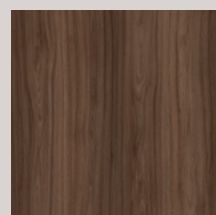


This collection clearly breaks with convention. Instead of the straight lines that usually dominate kitchen designs, Paris seduces with its curves and graphic elements, which round off edges to produce a softer overall feel. It tears up the rule book with its innovative design and the subtle detailing that highlights the space and adds a sense of rhythm to the rooms. It brings a harmonious contrast to the regular structure of the storage units, creating a unique, elegant and warm feel that conveys a sense of everyday easy living.

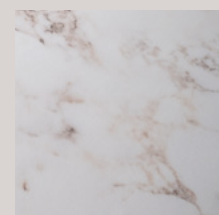
**Véronique** - DESIGNER



Purple



Fox



Gold Marmor





# P A R I S



## LOFT MODEL

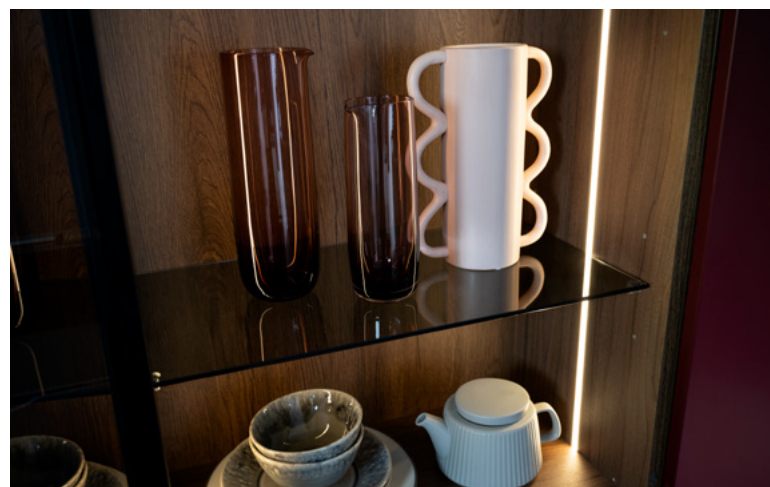
Melamine-faced high density particle board fronts with a water-based lacquered finish, available in 21 colours (Purple in the photo). Laminate worktop in Gold Marmor and Fox.



# AN EYE FOR DETAIL



Rounded fronts that mirror the worktop.



Illuminate your glass cabinet in style.



A marble-effect worktop for an extra soft touch.





# C A R D I F F



## SHAKER MODEL

Shaker-style kitchen featuring solid wood fronts, available in 10 elegant colours. Pictured here in a stunning combination of Cypress Blue for the island and Clay for the cabinetry, creating a timeless look.



# AN EYE FOR DETAIL



A flawless blend of sophisticated design and eye-catching details, delivering both style and functionality for modern living.



The dramatic veined stone worktop beautifully contrasts the soft, neutral tones, adding depth and character to the kitchen.



Striking brass accents and handles bring a touch of luxury, standing out brilliantly against the light worktop and cabinetry. Perfect for a bold, yet refined finish.





# R O M E



## ARCOS EDITION MODEL

Melamine-faced high density particle board fronts,  
available in 3 colours (Corten in the photo).  
Laminate worktop and splashback in Nano Black.



# AN EYE FOR DETAIL



Take advantage of a multi-purpose back panel with infinite possibilities for personalisation.



Store your bottles in style with Schmidt's bespoke unit.



Choose from an extensive selection of designer handles.





# STOCKHOLM



**ARCOS SWEET MODEL**

Melamine-faced high density particle board fronts with a soft-touch ultra matt finish, available in 8 colours (Claystone Sweet in the photo). Laminate worktop in Nano Claystone. Laminate splashback in Crystal Marmor.



# AN EYE FOR DETAIL



The handleless fronts open with a simple grip profile, or touch to open.



Take advantage of the extra storage space with the internal pull-out drawer.



Display your beautiful kitchenware and decorative items in the cubbyholes.





# TOULOUSE



## ARCOS EOLIS MODEL

Fronts in melamine-faced particle boards, Fox  
Trot colour; available in 25 colours.

## LOFT MODEL

Fronts in hydro lacquered particle boards,  
Peach colour; available in 21 colours.  
Worktop in laminate, Gold Marmor colour.



# AN EYE FOR DETAIL



Fluted wood effect for your front doors



Choose rounded fronts that combine design and functionality.



Softness and design come together with the rounded fronts of the Moon collection.





# LIVERPOOL



**GIRO MODEL**

MDF panel fronts with a water-based lacquered finish, available in 21 colours (Mossa in the photo).

**LOFT MODEL**

Melamine-faced high density particle board fronts with a water-based lacquered finish, available in 21 colours (White in the photo).



# B L A A V A N D



## ARCOS EOLIS MODEL

Front panels made of melamine-coated particle board, Alabama colour; available in 25 colours.  
Worktop in Moonstone-colored laminate.



LOURMARIN



ARCOS MODEL

Fronts in melamine-faced particle boards,  
Magnolia colours, available in 25 colours.  
Worktop in laminate, Fox colour.



# AN EYE FOR DETAIL



A warm and inviting dining nook, bathed in natural light.



A kitchen with a sleek design, where the balance of lines creates perfect harmony.



The warm elegance of the Fox colour for a kitchen full of character.





# MILAN



## ARCOS SWEET MODEL

Melamine-faced high density particle board fronts with a soft-touch ultra matt finish, available in 8 colours (Sirra Sweet in the photo). Compact laminate worktop in Nano Caneo and Nano Black Marmor.



# OSLO

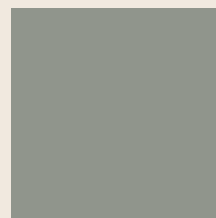


Featuring a blend of heritage and modernity, this collection heralds a return to the very origins of interior design. Drawing inspiration from its birthplace within the heart of Alsace's forests, Schmidt is reconnecting with the very essence of the furniture and the beginning of the company's history to create a collection that showcases its expertise in crafting a noble material, i.e. solid wood. This approach is essential for meeting the new expectations for sustainability and authenticity, as well as the challenges of embracing smart manufacturing practices. The simple beauty of the pure material is ideal for creating a contemporary, authentic kitchen.

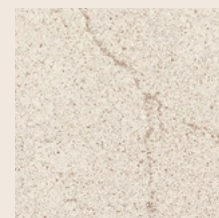
**Jonathan** - DESIGNER



Alona Oak teinté



Avocado



White Teti





# OSLO



## BAIA MODEL

Veneer high density particle board central panel and solid oak frame, available in 13 colours (stained Alona Oak in the photo).  
Recycled mineral worktop in White Teti.

## ORIGIN MODEL

Fronts made of 100% recycled wood melamine-faced high density particle board, available in 4 colours (Avocado in the photo).



# AN EYE FOR DETAIL



Easy to open fixed profile for the handleless frame fronts.



A designer drawer with glass sides for storing your kitchenware.



Ultra-resistant recycled quartz worktop for easy cleaning.





# COPENHAGEN



## DOLCE BOSCA MODEL

Knot-free oak veneer high density particle board fronts with water-based open grain lacquer finish, available in 13 colours. Laminate worktop in Yule Grey and Alabama.



# AN EYE FOR DETAIL



Display your beautiful kitchenware in style.



Illuminate your work area with our built-in spotlights.



Drawers just as beautiful inside as they are outside.





# AIX-EN-PROVENCE



## **BOSCA MODEL**

Knotted oak veneer high density particle board fronts, available in 3 colours (stained Amber Oak in the photo).

## **BOSCA STRIA MODEL**

Grooved MDF fronts with a knotted oak veneer, available in 3 colours (stained Amber Oak in the photo).



# L O N D O N



**NEBRASKA MODEL**

Solid oak frame, ash veneer centre panel with water-based open grain lacquer finish, available in 10 colours (Celest in the photo). Quartzo worktop in Lyskam, available in 3 colours.



# AN EYE FOR DETAIL



Smart storage with a touch of elegance for everyday life.



A moment of relaxation in an classic and bright kitchen.



Choose from an extensive selection of designer handles.





# BRISTOL



## NEBRASKA MODEL

Solid oak frame, ash veneer centre panel with water-based open grain lacquer finish, available in 10 colours (Forest Green in the photo). Laminate worktop in Gold Marmor.



# ODENSE



## BOSCA STRIA MODEL

Fronts made of grooved knotty oak veneer on MDF (medium-density fiberboard) panels, stained Alabama colour, available in 3 colours.



# AN EYE FOR DETAIL



The wall units in a natural tone create a warm and welcoming atmosphere.



Beautiful design lines give the base cabinets an elegant and sleek look.



Brass goes perfectly with warm, natural tones.







# GETTING DRESSED

Organisation and aesthetics play a key role when designing our living spaces. Dressing rooms are so much more than a storage space. They embody the perfect combination of practicality and style, while offering a dedicated space for clothes and accessories. Draw inspiration from our innovative designs, quality materials and customisable layouts, which are designed to meet your specific needs.





# V E N D Ô M E

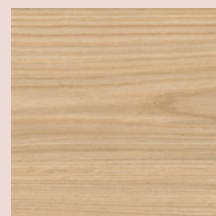


A harmony of colours and a breath of fresh air...such are the ingredients for an elegant and unique ensuite that is all your own. Even the headboard brings functionality. The wall cabinets with their swing doors offer ample storage and extend all the way to the bathroom and its original wide passageway. The Peach and Alona Oak tones are a match made in heaven, meaning that the final result is both subtle and sophisticated.

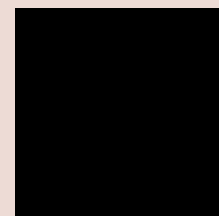
**Marco** - DESIGNER



Peach



Alona Oak



Black





# VENDÔME

## DRESSING ROOM

Melamine-faced high density particle board unit, available in 25 colours (Alona Oak in the photo).  
Melamine-faced high density particle board fronts with water based lacquered finish, available in 21 colours (Peach in the photo).





# AN EYE FOR DETAIL



Illuminate your headboard with the built-in backlight.



A practical drawer for storing jewellery and accessories.



Match the front colours with your walls.





# BIARRITZ



## DRESSING ROOM

Melamine-faced high density particle board unit, available in 25 colours (Alabama in the photo). Melamine-faced high density particle board fronts with water based lacquered finish, available in 21 colours (Caneo in the photo). Melamine-faced high density particle board sliding fronts with a digitally printed finish, available in 28 colours (Japan Garden Clay in the photo).



# EDINBURGH



## DRESSING ROOM

Melamine-faced high density particle board open units with water based, available in 21 colours (Forest Green in the photo). Melamine-faced high density particle board fronts, available in 25 colours (Everest in the photo).



# GLASGOW



**DRESSING ROOM**

Melamine-faced high density particle board unit, available in 25 colours (Alona Oak and Osaka in the photo).





# WORKING

The workspace needs to be a precious ally. It must combine functionality, comfort and, of course, a stylish design, to offer everyday inspiration. Each work solution tells a unique story and must adapt to your specific needs by making best possible use of the available space. Whether you are looking for ergonomic solutions to improve your well-being, modular units to save space or elegant rooms to bring a sublime touch to your home interior, our collections will meet all your expectations.





# ANTI B E S



## OFFICE

Structure made of 100% recycled wood melamine-faced high density particle board, available in 4 colours (Twist in the photo). Melamine-faced high density particle board fronts with a water based lacquered finish, available in 21 colours (Mossa in the photo).



# HELSINKI



## OFFICE

Structure and fronts made of 100% recycled wood melamine-faced high density particle board, available in 4 colours (Claystone in the photo). Laminate worktop in Nano Claystone.



# GENEVA

## LEISURE ROOM

Structure and office made of melamine-faced high density particle board unit, available in 25 colours (Celest and Vison in the photo). Melamine-faced high density particle board fronts, available in 25 colours (Harvey in the photo).







# RELAXING

The TV unit combines functionality and practicality with an aesthetic design to blend seamlessly into your home interior. Schmidt's collection of TV units has been developed to satisfy every need and style. Whether looking for a minimalist design or functional unit, the range of possibilities is endless. The collection offers a wide variety of designs featuring elegant finishes, premium quality materials and customisable configurations.





# B E R G E N



## GLASS CABINET

Melamine-faced high density particle board unit, available in 25 colours (Alona Oak in the photo). Glass fronts, black lacquered frame.

## TV UNIT

Melamine-faced high density particle board unit and fronts, available in 25 colours (Clay in the photo).



# PALERME



**TV UNIT**

Structure made of melamine-coated particle board, Caneo and Everest colours, available in 25 colours. Front panel made of laminated particle board, ultra-matte surface, Nano Black Marmor colour, available in 4 colours.





# TIDYING

Sideboards and bookcases are an essential part of any home interior, and they are designed by Schmidt with the same expertise and attention to detail as the rest of the home. They are available in a timeless on-trend style and feature graphical lines, while offering countless optimised storage spaces. Sideboards and bookcases are a must-have for storing kitchenware, books and other objects. Our designers can tailor our units to meet your exact width, height and depth requirements, so that they will blend harmoniously into your interior.







# VERSAILLES

## CABINET

Structure and fronts made of melamine-faced high density particle board unit, available in 25 colours (Fox in the photo).



# MONTPARNASSE

## BOOKCASE

Structure and fronts made of melamine-faced high density particle board unit, available in 25 colours (Fox in the photo).



O X F O R D



**BOOKCASE**

Melamine-faced high density particle board  
fronts and unit, available in 25 colours  
(Celest in the photo).



# C Ô M E



## BOOKCASE

Melamine-faced high density particle board unit, available in 25 colours (Caneo and Alabama in the photo). Laminate-faced high density particle board fronts with an ultra-matt finish, available in 4 colours (Nano Black Marmor in the photo).



# LA CIOTAT



## SIDEBOARD

Melamine-faced high density particle board unit, available in 25 colours (Clay in the photo), flat and grooved knotted oak veneer fronts, available in 3 colours.

## CABINET

Melamine-faced high density particle board unit, available in 25 colours (Amber Oak in the photo). Melamine fronts, available in 25 colours (Clay in the photo).





# LAUSANNE

Melamine-faced high density particle board fronts with a soft-touch ultra matt finish, available in 8 colours (Navy Sweet in the photo).



# ZURICH

Melamine-faced high density particle board unit and fronts, available in 25 colours (Caneio in the photo).





# STORING

Schmidt's interior storage solutions can be adapted to suit your needs and reflect your style, with quality materials and innovative designs that blend perfectly into your living spaces. Whether you are looking to create an organised and stylish storage space or optimise your laundry room for maximum efficiency, our team of experts can guide you every step of the way.





# AMSTERDAM

## LARDER UNIT

Melamine-faced high density particle board unit, available in 2 colours (Caneo in the photo).  
Melamine-faced high density particle board shelves, available in 10 colours (Alona Oak in the photo).



A functional larder hidden behind a concealed door.



A functional pull-out drawer for even more storage.



Open shelves for storing your jars.





# TALLINN

## LARDER AND LAUNDRY ROOM

Melamine-faced high density particle board unit, available in 25 colours (Harvey in the photo).  
Melamine-faced high density particle board fronts with a soft-touch ultra matt finish, available in 8 colours (Clay Sweet in the photo).







# M A L M Ö

## BAR UNIT

Melamine-faced high density particle board unit, available in 25 colours (Clay in the photo). Melamine-faced high density particle board fronts with a soft-touch ultra-matt finish, available in 8 colours (Claystone Sweet in the photo).



# C H A R T R E S

## BAR UNIT

Melamine-faced high density particle board unit, available in 25 colours (Fox in the photo). Melamine-faced high density particle board fronts with a water-based lacquered finish, available in 21 colours (Purple in the photo).





# STRUCTURING

Bookcases, shelves, partitions, sliding doors... partitioning units continue to appear in new shapes and styles. High, low, square or even round, they can be adapted to any interior to create partitions that are sometimes essential for the room's layout. Whatever the size of your home, the need for partitioning can sometimes be crucial. To bring a sense of structure to your spaces without spoiling their character, Schmidt's experts can offer a wide range of innovative, functional partitioning alternatives to suit every space.





# R O M E



## DOUBLE-SIDED BOOKCASE

Melamine-faced high density particle board unit and fronts, available in 25 colours (Vison in the photo).



# S É L E S T A T



## DRESSING ROOM

Melamine-faced high density particle board unit, available in 25 colours (Alabama and Celest in the photo). Fronts made of 100% recycled wood melamine-faced high density particle board, available in 4 colours (Twist in the photo).



# R I G A



## TV UNIT

Melamine-faced high density particle board unit and fronts, available in 25 colours (Clay in the photo).  
Melamine-faced high density particle board fronts with a soft-touch ultra matt finish, available in 8 colours (Claystone Sweet and Clay Sweet in the photo).





# GETTING READY

At Schmidt, bathrooms are much more than just a functional room. They mirror your lifestyle and personality, where each day begins and ends. We design bathrooms that combine functionality, style and comfort in equal measure, while satisfying all your tastes and needs.





# MONTMARTRE



**LOFT MODEL**

Melamine-faced high density particle board fronts with a water-based lacquered finish, available in 21 colours (Peach in the photo).

**MOON MODEL**

MDF fronts with a water-based lacquered finish, available in 21 colours.



# TURIN



## ARCOS SUPERMAT 20 MODEL

Laminate-faced high density particle board fronts with an ultra-matt finish, available in 4 colours (Nano Black Marmor in the photo).

## LOFT MODEL

Melamine-faced high density particle board fronts with a water-based lacquered finish, available in 21 colours (La Vie en Rose in the photo).





# BIRMINGHAM

## ARCOS MODEL

Melamine-faced high density particle board fronts, available in 25 colours (Light Fox in the photo).



# BREST

## ARCOS SWEET MODEL

Melamine-faced high density particle board fronts with a soft-touch ultra matt finish, available in 8 colours (Matcha Sweet in the photo).





# VISUALISING

With a healthy dose of inspiration from our catalogue and website, allow us to guide you through your project every step of the way. The following pages should help you picture your project more clearly in your mind, while showing the different possibilities available. This is the first step before actually meeting our designers in the showroom. They will help you create a home interior that tells your life story and reflects your lifestyle.





# PREPARE YOUR PROJECT

## WITH YOUR DESIGNER, ZERO STRESS GUARANTEED

From idea to installation, from dream to reality, you can count on our support every step of the way. Whether in the showroom or from a distance, we will stay in touch throughout your project and even afterwards!

### GET INSPIRED AND DESIGN YOUR PROJECT



Find and save your inspirations on the [www.home-design-schmidt.uk](http://www.home-design-schmidt.uk)

Try out your ideas with the kitchen and interior solutions **3D configurator**.

Create your **project space** and fill in the details. This means that your designer will be better prepared for your first meeting in the showroom.



Are you looking for a **virtual appointment** with your showroom? Then ask for a telephone appointment.

Would you rather meet your designer in person and **discover the showroom**? Then make your request online, by phone or by email.

Would you rather not travel to the showroom? Then you can choose the option of an initial **home appointment**.

### ENJOY A UNIQUE EXPERIENCE IN THE SHOWROOM



Your designer will tailor your project to your needs and present a **3D preview**.

**VR headsets** are available in many showrooms so that you can picture your future home interior in **virtual reality**.

### YOUR PROJECT WITH COMPLETE PEACE OF MIND



Your designer will then come to **your home** to measure up for your bespoke project so that it fits perfectly with millimetre precision.

Find **all your documents** in your project space and follow the different steps in your project.

**You will be notified** of the delivery and installation dates by a Schmidt fitter.

**Take delivery of your project.** Your designer will check everything and make sure that everything works.

### ARRANGE AN APPOINTMENT IN THE SHOWROOM, OVER THE PHONE OR AT HOME

### LET'S CONTINUE THE STORY TOGETHER



**Refer your friends!** Share your experience and we will give you a gift as soon as they finalise their projects (see terms and conditions in the showroom).

**Post your most beautiful photos** on social media with [@schmidt\\_unitedkingdom](https://www.instagram.com/schmidt_unitedkingdom)

**Stay in touch** and check out our new products and trends, and get inspired for a new project, in one of our showrooms or on our website.



# E 1 3 0

## THE DESIGN OF A SCHMIDT KITCHEN

E130 is a concept based on the 3 pillars of Schmidt design: aesthetics, space optimization, and ergonomics.



# SMART EQUIPMENT

## AT THE SERVICE OF YOUR DAILY LIFE

Designed to adapt to your movements, our furniture combines functionality and comfort. Schmidt creates solutions that make everyday life as smooth as it is inspiring.



### AESTHETICS

Our furniture is designed to ensure balanced proportions and a harmonious line design.

### SPACE OPTIMIZATION

Made-to-measure down to the millimeter, at no extra cost.

### ERGONOMICS

An ideal furniture height, adapted to all body sizes.

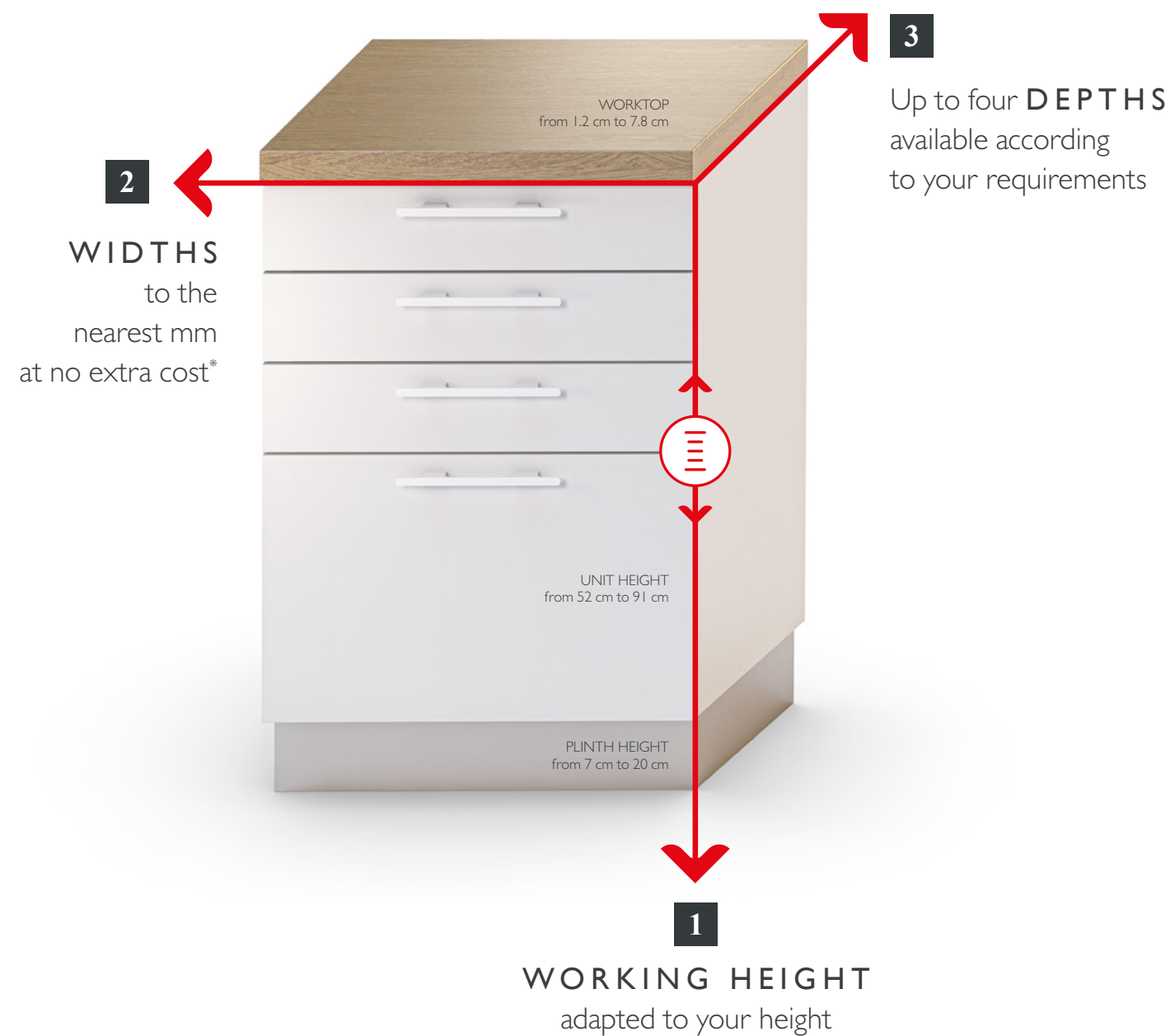
### AT SCHMIDT, EVERY KITCHEN IS CONCEIVED AS A TRUE LIVING SPACE

where the elegance of lines meets intelligent design.



## 3 D FIT CUSTOM-MADE IN 3 DIMENSIONS

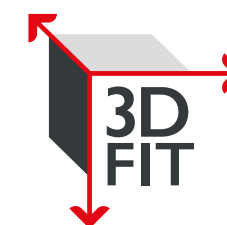
To make best use of the available space and produce a flawless finish, every millimetre counts. With 3D FIT, Schmidt can adapt the three different dimensions of your units to conjure up even more storage space.



\*Up to three bespoke units per kitchen at no extra cost, to be chosen from a collection of bespoke units (excluding the Sign and Twin finishes), from the Lagune, Crystal, framed MDF and wood ranges.

## MORE STORAGE SPACE

With a depth of **62.5 cm**, you can make the most of the deeper drawers for storing saucepans back to back, two stacks of plates one behind the other, and even oversize appliances.



### FEEL FREE TO ASK FOR ADVICE

from the designers in your local showroom. They will suggest units in made-to-measure dimensions that are tailored to both you and your family.



# THE key. COLLECTION

A collection of units featuring identical Schmidt quality for a very affordable price.  
Consult one of our experts to find out more\*.

12  
ranges

22  
front colours

White	Black
Clay	Gaia
Vison	Caneo
Avocado	Forest Green
La Vie en Rose	Purple
Cypress Blue	Navy
Marvel Light	Light Fox
Vintage Oak	Alabama
Alona Oak	Fox

12  
handles

36  
worktop colours

Clay	Nano Black
Crystal Marmor	Gold Marmor
Valencia	Marvel Light
Yule	Yule Grey
Paladina	Saint Laurent
Black Work	Light Fox
Vintage Oak	Alabama
Alona Oak	Fox

5  
recommended appliance brands

10  
carcase colours

White	Gaia
Clay	Claystone
Matt Caneo	Light Fox
Vintage Oak	Alabama
Alona Oak	Fox



\*The final price can vary according to size of the project and the commercial policy applied by each individual showroom.





# BE DARING, BE COLOURFUL

A WIDE CHOICE OF PLAIN COLOURS FOR YOUR HOME INTERIOR.

					
White	Everest	Celest	Kashmir Grey	Stone Grey	Black
					
Magnolia	Vison	Clay	Gaia	Claystone	Caneo
					
Avocado	Mossa	Matcha	Forest Green	Navy	Stardust
					
Nordik Blue	Cypress Blue	La vie en rose	Peach	Coral	Rio
					
Sirra	Purple				

# MAKE A STYLISH ENTRANCE

ASSERT YOUR STYLE WITH OUR MATERIAL & WOOD EFFECTS.

				
Blackwork	Marvel	Marvel Light	Twist	Silvercross
				
Nano Black Marmor	Corten	Slowwood	Harvey	Osaka
				
Vintage Oak	Alona Oak	Alabama	Pastel Oak	Light Fox
				
Murphy	Amber Oak	Fox Trot	Fox	





# DISCOVER OUR MATERIALS...

All our front materials are tested in our laboratories to guarantee their quality, durability and longevity over time.

# HIGH QUALITY



## MELAMINE

High-resistance melamine facing.  
Wood and material effects, or plain colours. Excellent value for money  
*25 colours available*



## 100% RECYCLED WOOD PANELS

The Origin collection is made of 100% recycled wood panels.  
Material effects or plain colours.  
*4 colours available*



## WATER-BASED SATIN LACQUER

Water-based lacquer that meets environmental requirements.  
Lightweight, easy-to-clean structure.  
*21 colours available*



## GLOSSY LACQUER

Effective impact resistance. Smooth, pleasant feel.  
Reflects light for a high-quality finish.  
*5 colours available*



## SWEET MELAMINE

Melamine facing with a soft-touch super-matt varnished finish offering resistance to fingerprint smudges. Easy to clean.  
*8 colours available*



## NANO LAMINATE

High-resistance laminate.  
Extremely matt soft-touch finish offering resistance to fingerprint smudges.  
*4 colours available*



## OPEN GRAIN LACQUER

Lacquer applied to solid wood or veneer that meets environmental requirements.  
Easy-to-clean matt finish.  
*10 colours available*



## STAINED WOOD VENEER

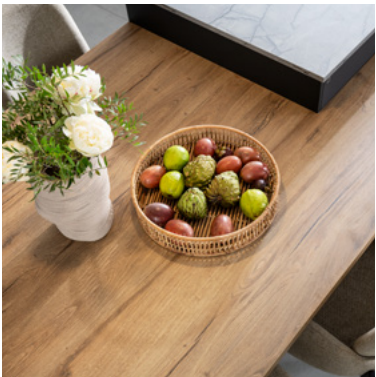
Stain applied to solid wood or veneer that meets environmental requirements.  
Natural, matt, easy-to-clean finish.  
*3 colours available*





# CHOOSE YOUR SURFACE

Your designer will advise you on the different worktop materials and colours according to your lifestyle, tastes and budget.



## LAMINATE

With no fewer than 31 colours, our water-repellent worktops allow you to unleash your imagination.  
Available in thicknesses of 20, 40 and 78 mm  
*31 colours available*



## NANO LAMINATE

Say goodbye to fingerprints and superficial scratches, which can be removed with a simple wipe of a magic sponge.  
Available in thicknesses of 20 and 39 mm  
*5 colours available*



## COMPACT LAMINATE

This laminate is completely resistant to moisture.  
Available with a thickness of 12 mm  
*4 colours available*



## COSMOLITE

Comprising 100% recycled minerals from the quarrying industry. Resistant to impacts, scratches, abrasion, heat and cold. Low maintenance for true easy living.  
Available with a thickness of 20 mm  
*5 colours available*



## CERAMIC

Highly resistant to heat, scratches and moisture.  
Available in thicknesses of 20, 40 and 78 mm  
*6 colours available*



## STAINLESS STEEL

Your worktop is immune to water and heat. Easy-to-clean stainless steel is a perfect match for all front colours.  
Available with a thickness of 40 mm



## WOOD

This natural and authentic material will give your kitchen a touch of style and prestige. Choose from a selection of species, including beech, oak, maple and walnut.  
Available in thicknesses of 40 and 78 mm

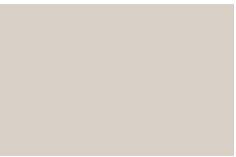
# 36 COLOURS LAMINATE WORKTOPS



Everest / Nano Everest



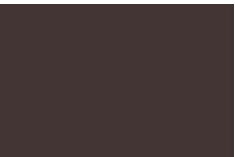
Emerson Mat



Clay



Nano Claystone



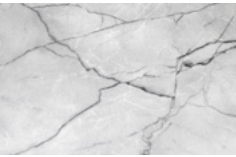
Nano Caneo



Nano Black



Yule



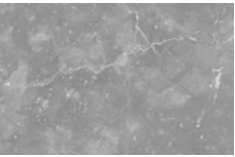
Yule Grey



Gold Marmor



Crystal Marmor



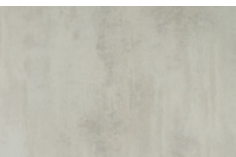
Rocca Grey



Scala



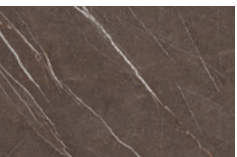
Valencia



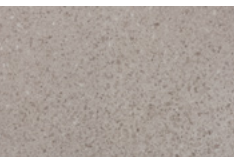
Marvel Light



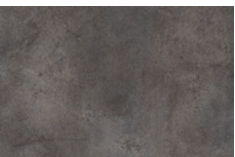
Marvel



Paladina



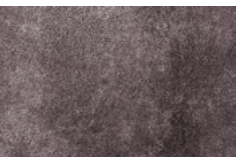
Calcita



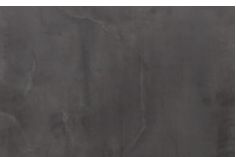
Uptown Dark



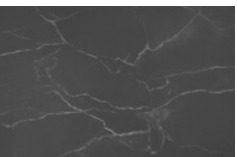
Moonstone



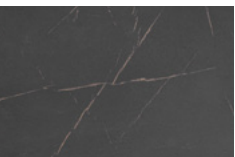
Etna Grey



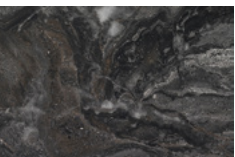
Blackwork



Nano Black Marmor



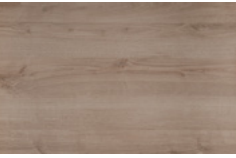
Saint Laurent



Armstrong



Slowwood



Vintage Oak



Harvey



Light Fox



Alona Oak



Tavern 21



Pastel Oak



Murphy



Alabama



Fox



Amber Oak





# BRING COLOUR TO YOUR CARCASSES

At Schmidt, we push personalisation to its limits:  
choose from our 24 colours for your unit sides and interiors.

					
White	Everest	Celest	Kashmir Grey	Vison	Stone Grey
					
Magnolia	Gaia	Clay	Claystone	Caneo	Black
					
Marvel Light	Marvel	Slowwood	Harvey	Vintage Oak	Pastel Oak
					
Light Fox	Alona Oak	Alabama	Murphy	Amber Oak	Fox







# MAKE A LASTING IMPRESSION

Whether graphic, floral, material effects or exclusive designs, check out our new collection of 28 exclusive printed finishes for creating a truly one-of-a-kind interior.



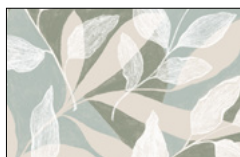
Watercolour Green



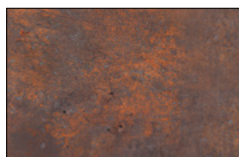
Botanic Black



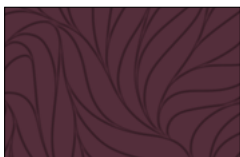
Japan Garden Clay



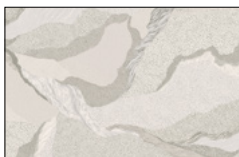
Green Leaf



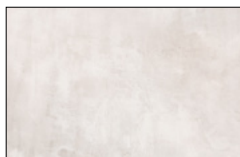
Oxid Copper



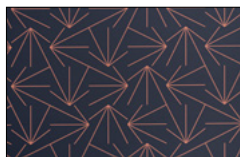
Stencil Purple



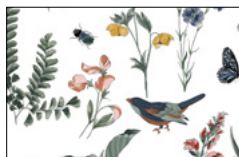
Pencil Clay



Lime Clay



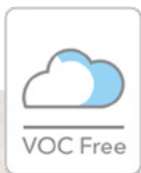
Art Déco



Herbarium White

Personalisation is consistently ranked high on the customer's list of expectations. Schmidt, France's leading manufacturer, firmly believes in the importance of meeting this need. That is why we offer 28 exclusive printed finishes to allow everyone to express their style, whether in small touches or covering the entire room, to bring a truly personalised look to their home interior.

> Check out all our designs and finishes at <https://home-design-schmidt.uk/colours/#prints>



## STRICT ENVIRONMENTAL CERTIFICATION

Your fronts are designed and printed directly in our factories in Alsace, where they are continuously checked to ensure the highest quality. The inks used do not contain any VOCs (volatile organic compounds). Our inks are GREENGUARD Gold certified and meet strict criteria aimed at reducing indoor air pollution and the risk of exposure to chemicals, while helping create healthier indoor environments.

# PRINT YOUR STYLE

While some may use prints for a light touch, others are experts at harnessing bold designs to create unique home interiors. With its wide range of applications, Schmidt has the design for you, whatever your personality.



## THE DISCREET

A subtle touch for your cabinets.

## THE ORIGINAL

A decorative touch on your doors.



## THE BOLD

Go big for a bold move.





# A COMMITTED PARTNERSHIP

B Corp Certified and the world's first Climate Positive Paint Company, COAT is all about simplicity, timelessness, and making it easy for people to create a tasteful home in a climate-conscious way.



COAT's water-based, low VOC, premium paints are available to order online and formulated to be amongst the highest-quality on the market. With a reputation of unrivalled application and coverage, the range consists of 90, carefully considered shades, available in x6 finishes - Flat Matt, Eggshell, Soft Sheen, Claypaint, Exterior Eggshell and Floor Paint.



With a cult following of climate-conscious interior designers, contractors and luxury DIYers, COAT has been leading the way for sustainable interiors since launching in 2020. Founders Rob Abrahams and Rob Green have been purposeful with every decision since launching the business, going far beyond the expected minimum for the paint industry.



CHECK OUT COAT'S SUSTAINABLE PRINCIPLES



# TREAT YOURSELF SCHMIDT QUALITY

Some facts are essential when it comes to explaining the quality of our products.  
Whether kitchens, interior solutions or bathrooms, our units are designed to withstand the challenges of everyday life.



**WORKTOP**  
Your water-repellent laminate worktop is immune to splashes.



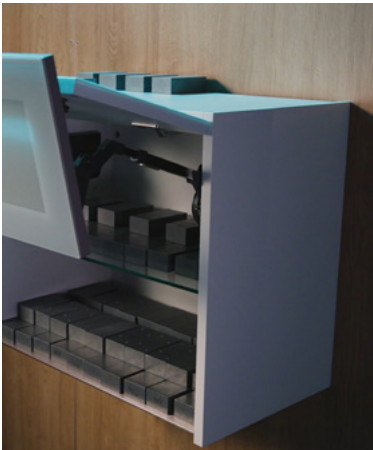
**19 MM PANELS**  
Our panels are capable of withstanding everyday loads.



**PLINTHS**  
The plinth is protected with a watertight seal.



**HINGES**  
Say goodbye to slamming doors with our built-in soft-close buffers.



**REAR MOUNTING SYSTEM**  
Our wall units can support up to 160 kg with the rear mounting system.



**HANDLES**  
The coating on our handles ensures resistance to wear and tear.



**EDGINGS**  
The 1.4 mm thick edging protects your units against everyday impacts.



**LEGS**  
Each leg can support a weight of up to 200 kg.



Check out all the online videos of our **quality tests!**

# SCHMIDT COMMITMENT

Buying your bespoke furniture with us is more than just a transaction – it's a seamless and personalised journey designed around you. Together, we will transform your dreams into reality, creating spaces that inspire you.



- 1. SINGLE POINT OF CONTACT**  
from design to finish, we'll be with you from the initial planning to installation, and beyond.
- 2. A FREE, DETAILED ESTIMATE OF YOUR PROJECT**  
including the taking of measurements at your home (if required).
- 3. TRANSPARENT PRICING**  
for all projects: fitting & delivery.
- 4. FREE 10-YEAR WARRANTY\* FOR FURNITURE:** parts, labour and delivery.
- 5. FREE 25-YEAR WARRANTY\* FOR DRAWERS,** pull-out elements and hinges.
- 6. GUARANTEED DELIVERY AND COMPLETE INSTALLATION**  
in every case.
- 7. GUARANTEED CLEANLINESS**  
removal of packaging material and cleaning of your kitchen.
- 8. SATISFACTION**  
measured by a survey.

See the applicable conditions in the showrooms that display this charter.  
Subject to T&C in the showroom.

\*including 2-year legal guarantee



# THE EXCELLENCE OF SCHMIDT

## NOW AVAILABLE FOR YOUR BUSINESS

We provide a comprehensive range of solutions customised to meet your business requirements and property development needs.



Meeting rooms



Commercial displays



Break rooms



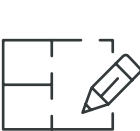
Corporate offices



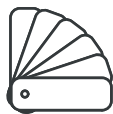
Medical practices



Property development



PERSONALISED PROJECT  
designed and manufactured  
for you with customised  
features for all kind of spaces



A WIDE CHOICE  
of products, colours  
and materials



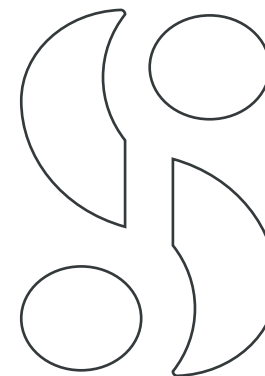
A SINGLE POINT OF CONTACT  
dedicated to manage  
your project from start  
to finish no matter the size



PARTNERSHIP NETWORK  
maximise your success by utilising  
our partner network to gain the  
best deals in the industry.







## THANKS TO ALL OUR PARTNERS

[www.crozatier.com](http://www.crozatier.com) - [www.quartz-design.fr](http://www.quartz-design.fr) - [www.inspiration-design.fr](http://www.inspiration-design.fr) - [www.baumalu.fr](http://www.baumalu.fr) - [www.lacerisesurlegateau.fr](http://www.lacerisesurlegateau.fr) - [www.artisansduson.fr](http://www.artisansduson.fr) - [www.manufacturededigoin.com](http://www.manufacturededigoin.com)  
[www.lalchimiste.paris](http://www.lalchimiste.paris) - [www.le-jacquard-francais.fr](http://www.le-jacquard-francais.fr) - [www.cristel.com](http://www.cristel.com) - [www.larochere.com](http://www.larochere.com) - [www.revoll768.com](http://www.revoll768.com) - [www.jeandubost.com](http://www.jeandubost.com) - [www.util.fr](http://www.util.fr) - [www.maronbouillie.com](http://www.maronbouillie.com)  
[www.magimix.fr](http://www.magimix.fr) - [www.seb.fr](http://www.seb.fr) - [www.monluminairefrancais.com](http://www.monluminairefrancais.com) - [www.luminairedod.com](http://www.luminairedod.com) - [www.atelierboutdebois.fr](http://www.atelierboutdebois.fr) - [www.tefal.fr](http://www.tefal.fr) - [www.gameca-rixheim.fr](http://www.gameca-rixheim.fr) - [www.coatpaints.com](http://www.coatpaints.com)

**PHOTOGRAPHERS:** Marc Barral Baron / Luc Frey / Visiolab / Shutterstock - **STYLISTS:** Marie-Christine Schlichter / Juliette Blondel

Photos are for illustrative purposes only and may differ from actual products. As part of our determination to constantly improve production quality, the manufacturer reserves the right to amend the characteristics of the ranges presented in this catalogue. We have taken every care in selecting and producing our fronts. It is perfectly normal for fronts to change over time according to ambient and light conditions. The use of appropriate cleaning products will help maintain their initial appearance.



**LE TRI  
+ FACILE**



CATALOGUE



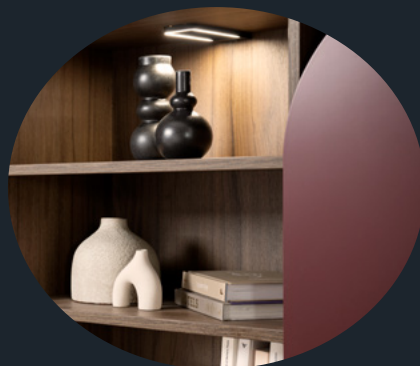
Schmidt Groupe is incorporated in the national register of furniture and homeware marketers under number FR 001049.  
This number warrants that Schmidt Groupe, as a member of the Éco-Mobilier eco-organisation, complies with its applicable regulatory obligations in pursuance of Section L 541-10-I 10° of the French Environmental Code.

SCHMIDT GROUPE - INCORPORATED IN THE COLMAR REGISTER OF COMPANIES UNDER NUMBER 326 784 709



# SCHMIDT

TIMELESS CRAFT. LASTING DIFFERENCE.



[www.home-design-schmidt.uk](http://www.home-design-schmidt.uk)

